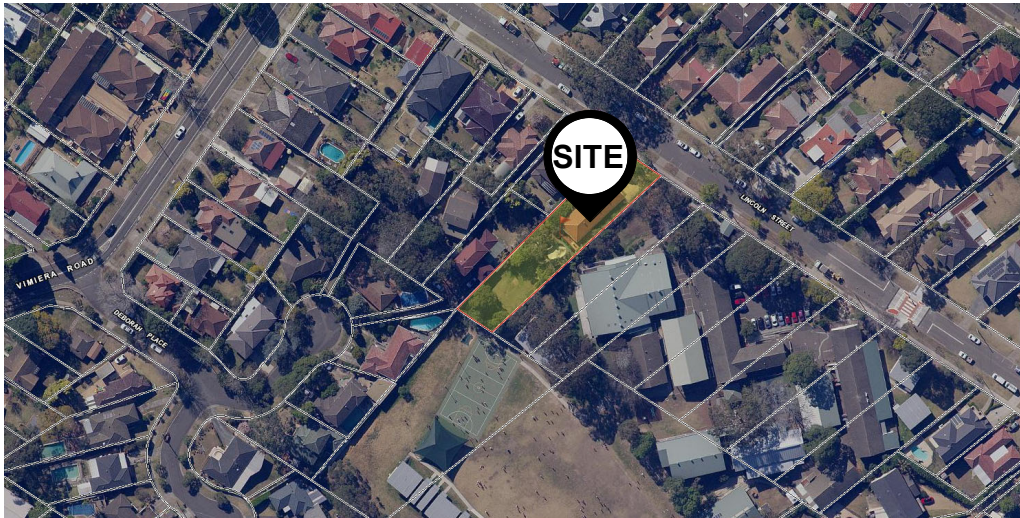



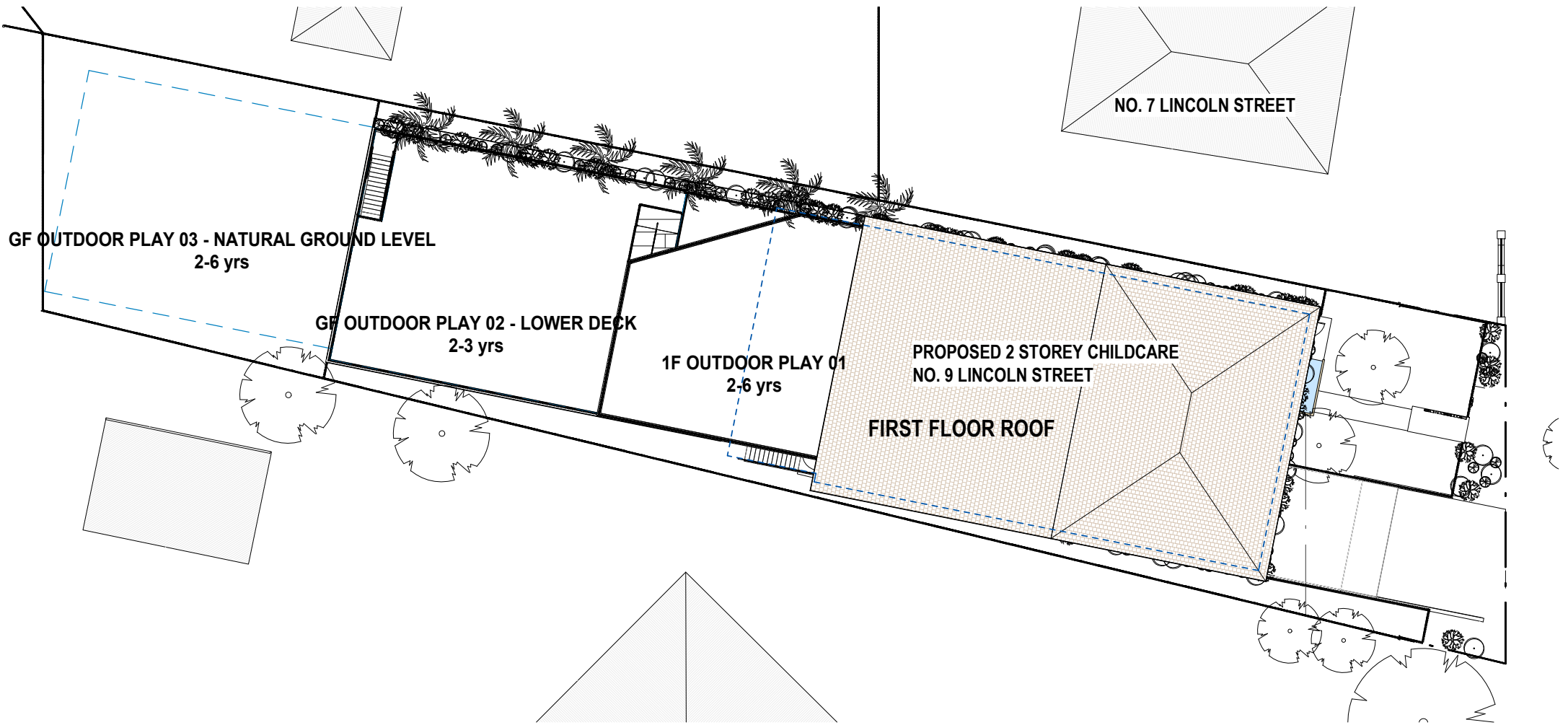
PROPOSED NEW CHILDCARE AT 9 LINCOLN STREET, EASTWOOD NSW

DRAWING LIST - Notification Plans

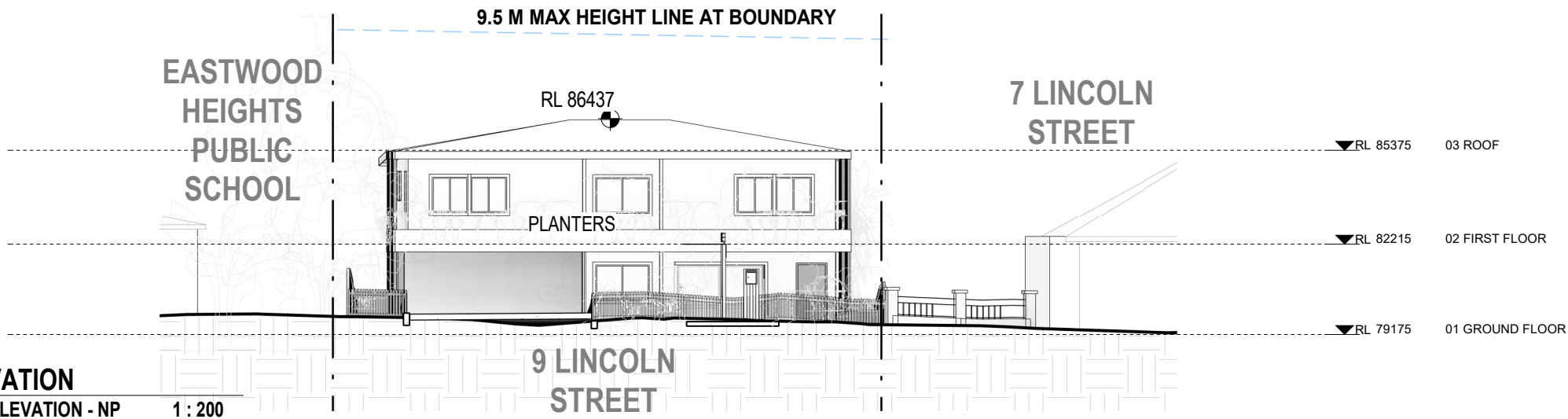
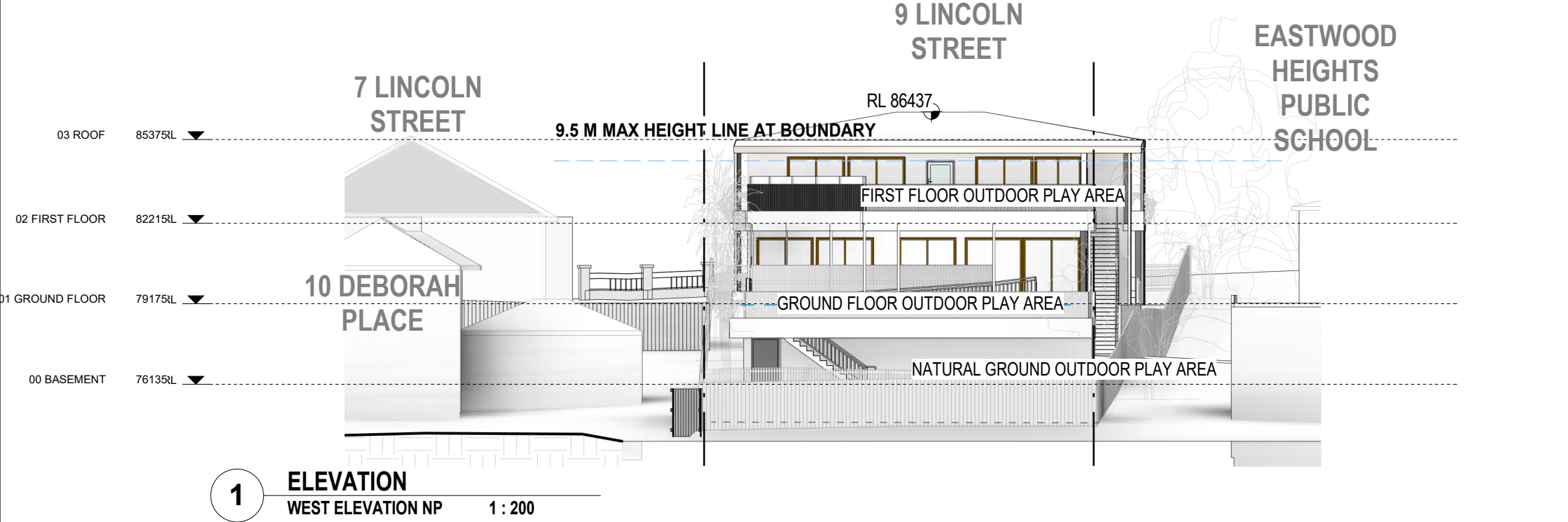
			REVISION
DA700	NOTIFICATION - COVER SHEET	B	20.10.22
DA701	NOTIFICATION - PLANS	B	20.10.22
DA702	NOTIFICATION - ELEVATIONS - EAST + WEST	B	20.10.22
DA703	NOTIFICATION - ELEVATIONS - NORTH + SOUTH	B	20.10.22



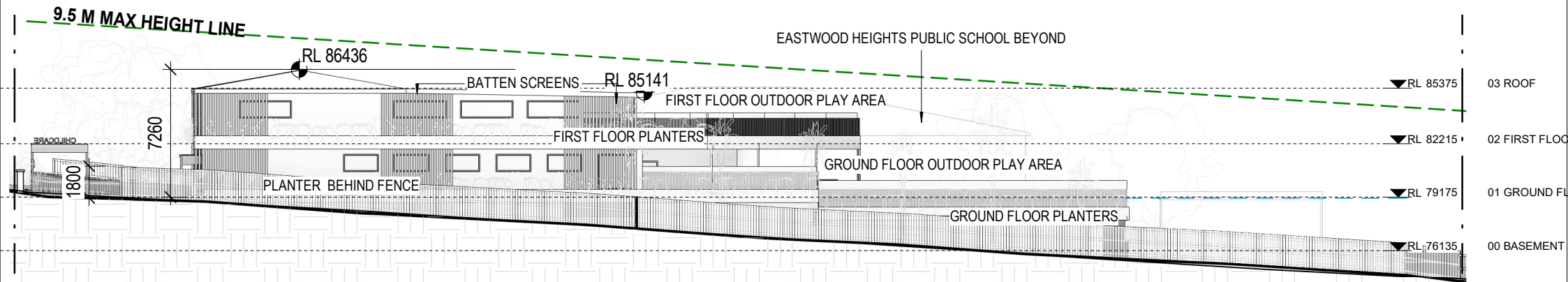
FOR	ISSUE	DATE	AMENDMENT	<div>- ALL BUILDING WORK TO COMPLY WITH BCA AND AS CODES AND RELEVANT AUTHORITIES REQUIREMENTS.</div> <div>- ALL STEEL CONCRETE AND TIMBER WORK TO BE IN ACCORDANCE WITH STRUCTURAL ENGINEERS SPECIFICATIONS AND RELEVANT SAA CODES.</div> <div>- LARGER SCALE DRAWINGS TAKE PRECEDENCE OVER SMALLER.</div> <div>- ALL DIMENSIONS TO BE CONFIRMED ON SITE. CONTACT THE ARCHITECT IF ANY DOUBT OR DISCREPANCY ARISES.</div> <div>- READ FIGURED REMAINS IN PREFERENCE TO SCALING.</div> <div><div><div></div><div>LISKOWSKI ARCHITECTS</div></div><div>© COPYRIGHT REMAINS WITH LAURIE LISKOWSKI ARCHITECTS</div></div>	PROPOSED CHILDCARE AT 9 LINCOLN STREET, EASTWOOD		<div>True North</div> <div></div>	Scale : 1 : 500 @A4
DA	A	12.09.22	DA		NOTIFICATION - COVER SHEET	Date : 20.10.22		
DA	B	20.10.22	DA			Project Number : 211105 Drawing Number : DA700 Rev : B		



FOR DA DA	ISSUE	DATE	AMENDMENT	<div><div>- ALL BUILDING WORK TO COMPLY WITH BCA AND AS CODES AND RELEVANT AUTHORITIES REQUIREMENTS.</div><div>- ALL STEEL, CONCRETE AND TIMBER WORK TO BE IN ACCORDANCE WITH STRUCTURAL ENGINEERS SPECIFICATIONS AND RELEVANT SAA CODES.</div><div>- LARGER SCALE DRAWINGS TAKE PRECEDENCE OVER SMALLER.</div><div>- ALL DIMENSIONS TO BE CONFIRMED ON SITE. CONTACT THE ARCHITECT IF ANY DOUBT OR DISCREPANCY ARISES.</div><div>- READ FIGURED DIMENSIONS IN PREFERENCE TO SCALING.</div><div><div>LISKOWSKI ARCHITECTS</div><div>© COPYRIGHT REMAINS WITH LAURIE LISKOWSKI ARCHITECTS</div></div></div>	PROPOSED CHILDCARE AT 9 LINCOLN STREET, EASTWOOD			<div>True North</div> <div></div>	Scale : 1 : 300 @A4		
	A	12.09.22	DA		NOTIFICATION - PLANS				Date : 20.10.22		
	B	20.10.22	DA		<div>LISKOWSKI ARCHITECTSwww.liskowski.com.au P 02 9212 3266 E info@liskowski.com.au</div> <div>Suite 107, 53 -59 Great Buckingham St. RedfernNominated Architect Laurie Liskowski 4224</div>				<div>Project Number : 211105</div> <div>Drawing Number : DA701</div> <div>Rev : B</div>		



FOR DA DA	ISSUE	DATE	AMENDMENT	<div>- ALL BUILDING WORK TO COMPLY WITH BCA AND AS CODES AND RELEVANT AUTHORITIES REQUIREMENTS.</div> <div>- ALL STEEL, CONCRETE AND TIMBER WORK TO BE IN ACCORDANCE WITH STRUCTURAL ENGINEERS SPECIFICATIONS AND RELEVANT SAA CODES.</div> <div>- LARGER SCALE DRAWINGS TAKE PRECEDENCE OVER SMALLER.</div> <div>- ALL DIMENSIONS TO BE CONFIRMED ON SITE. CONTACT THE ARCHITECT IF ANY DOUBT OR DISCREPANCY ARISES.</div> <div>- READ FIGURED DIMENSIONS IN PREFERENCE TO SCALING.</div> <div><div>LISKOWSKI ARCHITECTS</div><div>© COPYRIGHT REMAINS WITH LAURIE LISKOWSKI ARCHITECTS</div></div>	PROPOSED CHILDCARE AT 9 LINCOLN STREET, EASTWOOD		True North	Scale : 1 : 200 @A4		L A
					NOTIFICATION - ELEVATIONS - EAST + WEST			Date : 20.10.22		
					LISKOWSKI ARCHITECTS Suite 107, 53 -59 Great Buckingham St. Redfern			Project Number : 211105		
					www.liskowski.com.au P 02 9212 3266 E info@liskowski.com.au Nominated Architect Laurie Liskowski 4224			Drawing Number : DA702 Rev : B		

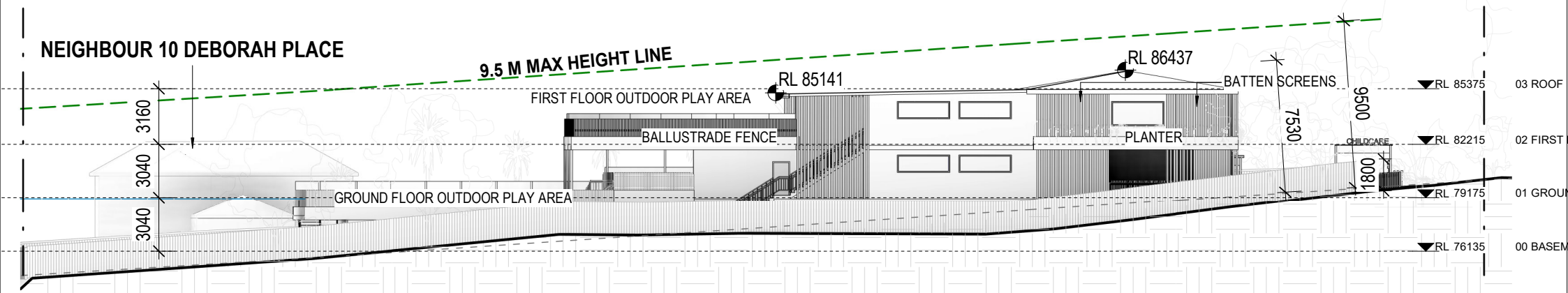


1

ELEVATION

NORTH ELEVATION NP

1 : 300



2

ELEVATION

SOUTH ELEVATION NP

1 : 300

FOR DA DA	ISSUE	DATE	AMENDMENT	<div><div><div>- ALL BUILDING WORK TO COMPLY WITH BCA AND AS CODES AND RELEVANT AUTHORITIES REQUIREMENTS.</div><div>- ALL STEEL, CONCRETE AND TIMBER WORK TO BE IN ACCORDANCE WITH STRUCTURAL ENGINEERS SPECIFICATIONS AND RELEVANT SAA CODES.</div><div>- LARGER SCALE DRAWINGS TAKE PRECEDENCE OVER SMALLER.</div><div>- ALL DIMENSIONS TO BE CONFIRMED ON SITE. CONTACT THE ARCHITECT IF ANY DOUBT OR DISCREPANCY ARISES.</div><div>- READ FIGURED DIMENSIONS IN PREFERENCE TO SCALING.</div></div><div><div>LISKOWSKI ARCHITECTS</div><div>© COPYRIGHT REMAINS WITH LAURIE LISKOWSKI ARCHITECTS</div></div></div>	PROPOSED CHILDCARE AT 9 LINCOLN STREET, EASTWOOD		True North	Scale : 1 : 300 @A4	
	A	12.09.22	DA		NOTIFICATION - ELEVATIONS - NORTH + SOUTH			Date : 20.10.22	
	B	20.10.22	DA		LISKOWSKI ARCHITECTS www.liskowski.com.au P 02 9212 3266 E info@liskowski.com.au			Project Number : 211105	
	Suite 107, 53 -59 Great Buckingham St. Redfern		Nominated Architect Laurie Liskowski 4224		Drawing Number : DA703				
								Rev : B	